

**TAYLOR COUNTY, FL**  
INVITES YOUR INTEREST IN THE POSITION OF  
**DIRECTOR OF ENGINEERING**

# THE COMMUNITY

Taylor County (approx. pop. 22,000) is a coastal county nestled in the “Big Bend” area of Florida, spanning approximately 1,200 square miles. It was established in 1856, named after the twelfth President of the United States, Zachary Taylor, and has long been known as the “Tree Capital of the South.”

The county seat, Perry (est. pop. 7400), was first named Rosehead by the early Native Americans because of the abundance of beautiful wild rose bushes that grew in the area. In 1875, the name was changed to Perrytown after Governor Stark Perry, and eventually renamed Perry.

The first courthouse was built in 1858 and was constructed out of logs. By the turn of the twentieth century, Taylor County was the home of a widely known and celebrated resort hotel built on the site of a sulfurous spring. With the belief that these sulfur springs offered some healing abilities, many of the wealthiest people from around the country made the journey to Taylor County to experience the springs. The resort offered many luxurious experiences, including a swimming pool, tennis courts, and a golf course.

Taylor County offers some of the best hunting and fishing in Florida. The County has nearly 60 miles of coastline, four rivers, and numerous streams, creeks, and springs. It also borders Apalachee Bay and has natural and artificial reefs and quick access to the Gulf. It's no surprise that anglers from all over reel in trophy-size catches of sea trout, redfish, grouper, sheepshead, and more. The County is known for some of the



best saltwater fishing and hosting annual fishing tournaments.

Taylor County is an inviting and welcoming community with a small-town feel and has much to offer, whether you are a resident or a visitor. Beautiful rivers and woodlands, parks, and an impressive sports complex promise to provide something for everyone. If you want to relax, sit and read a book, canoe down some of nature's most beautiful rivers, or sit under the pines while you listen to Blue Grass music, Taylor County is the place to call home.

Taylor County offers several parks and boat ramps to provide the opportunity to relax and enjoy the outdoors, including parks with equestrian facilities. Beautiful and tranquil rivers offer over a combined distance of 100 miles of quality fishing and nature trails.

Taylor County is home to the Florida Forest Festival, the Blue Grass Festival, and many other yearly events where you can find a spot to enjoy delicious seafood and listen to quality music and entertainment.

# THE AGENCY

Taylor County has an Administrator form of government governed by a five-member Board of County Commissioners elected by districts and serving a four-year term. The Board performs legislative, budgetary, and policy-making functions and advocates for citizens at all levels of government. The Board appoints the County Administrator, who serves as the chief executive officer of the County government, to implement all decisions, policies, goals, programs, and motions of the Board.



# THE POSITION

The Director of Engineering reports to the County Administrator and is a highly responsible, technical, supervisory, and administrative position. The Director organizes, plans, directs, and coordinates the operations and activities of public works projects in the County.

Led by the Director of Engineering, the Taylor County Engineering Department is responsible for providing professional support for Capital Improvement Projects and other programs, as well as routine public assistance. Professional support provided by the Engineering Department includes but is not limited to the following responsibilities:

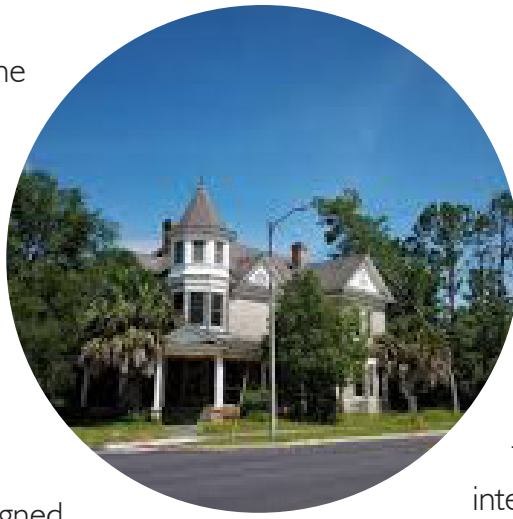
- Provide Engineering, Survey, and Construction Management services.
- Develop, administer, and manage competitive solicitations and contractual agreements with professional consultants and contractors.
- Prepare and administer local, state, and federal permitting of Capital Improvement Projects.
- Prepare and support grant application submittals for local, state, and federally funded CIP projects, including SCOP, SCRAP, TRIP, CIGP, TAP, and LAP projects through FDOT.
- Design, review, and inspection/acceptance of State Managed Bridge Replacement projects on off-system roadways.
- Serve as a core member of the Technical Review Committee, ensuring consistency of development with federal, state, and local ordinances.
- Inspect construction of roadways and stormwater facilities of public and private developments.
- Review and approve subdivision final plats.
- Respond and provide information to the public, including traffic data and evaluations, planning support,



flood mapping determinations, aerial photography, etc.

- Oversee monitoring and maintenance of the closed landfill property.
- Perform periodic County Park Limited Use Public Water System sample collection for testing.
- Prepare graphical presentations using CADD and GIS systems for projects and coordination with local departments and state partners.
- Coordinate and maintain GIS-based 911 Addressing data and delivery.
- Design and review projects to standards outlined in the FDOT's Manual of Uniform Minimum Standards for Design, Construction, and Maintenance for Streets and Highways.
- Design, review, and inspection of storm drainage systems, roads, streets, bridges, curbs and gutters, solid waste facilities, and other public works projects.
- Plan, schedule, and supervise public works improvements and lend technical assistance and supervision of employees engaged in public works operations.
- Attend and participate in conferences and meetings as directed.
- Perform related work as required.

Current challenges for the Engineering Department include public works projects related to the ongoing recovery efforts from Hurricane Helene which made landfall in Taylor County in September 2024.



The Director may be assigned to work various schedules, including compulsory work periods in special, emergency, and/or disaster situations, and may be required to stay on the premises during a declared emergency or as otherwise mandated.

Requirements include a bachelor's degree in engineering from an accredited university or college, preferably in Civil or Mechanical Engineering, and possession of a Florida professional engineer (P. E.) license.

## COMPENSATION

The salary range is \$68,868-\$99,849. Starting salary will be competitive and negotiable based on the qualifications and experience of the individual selected. Florida does not have a state income tax.

## TO APPLY

If interested in this exciting opportunity, visit [www.SRNsearch.com](http://www.SRNsearch.com) to apply online. The first review of resumes will take place on April 15, 2025; the position is open until filled.

Resumes will be screened according to the qualifications outlined above. Screening interviews with the most qualified applicants will be conducted by S. Renée Narloch & Associates to determine a select group of finalist candidates who will be asked to provide references; references will be contacted only following candidate consent. Final interviews will be held with Taylor County. Candidates will be advised of the recruitment status following the selection of the Director of Engineering. Questions regarding this recruitment may be directed to:

Ms. S. Renée Narloch, President  
S. Renée Narloch & Associates  
[info@SRNsearch.com](mailto:info@SRNsearch.com) | 850.391.0000  
[www.SRNsearch.com](http://www.SRNsearch.com)

Taylor County is an Equal Opportunity Employer. In an emergency, all employees are considered essential personnel and may be required to perform alternate duties. In accordance with Florida's Public Records/Sunshine Laws, applications and resumes are subject to public disclosure.

